



# Color printing for black-and-white prices

The time has come to add color to office documents without worrying about costs. The Phaser® 8860 color printer and Phaser® 8860MFP color multifunction printer allow offices to drastically reduce their total cost of printing.

Find out how much you can save.

Not all printed pages are created equal. The cost of a page is directly related to coverage, or the percent of the page covered by ink or toner. This document illustrates how per-page costs fluctuate by document, and how you can lower printing costs with Xerox.



B/W Coverage  
**1%**

Color Coverage  
**1%**  
**1%**  
**2%**  
**1%**

Printing Costs	In Color	In B/W
Phaser 8860 / 8860MFP:	<b>\$.01</b>	<b>\$.01</b>
Competitive Color Laser:	<b>\$.02</b>	<b>\$.01</b>

Printing Costs	In Color	In B/W
Phaser 8860 / 8860MFP:	<b>\$.06</b>	<b>\$.08</b>
Competitive Color Laser:	<b>\$.22</b>	<b>\$.08</b>

B/W Coverage  
**25%**



Color Coverage  
**21%**  
**10%**  
**8%**  
**6%**



**Call today.** For more information, call **1-877-362-6567** or visit us at **www.xerox.com/office**

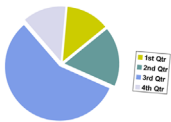
**Lorem ipsum dolor sit amet**

- Consectetur adipiscing elit.
  - Fusce ornare tellus eu arcu.
  - Proin ornare laoreet nulla.
- Donec eget nulla eu tortor
  - Vivamus molestie laoreet sem.
  - Pellentesque faucibus felis a purus.
  - Donec suscipit imperdiet lorem.
- Maecenas ut nibh nec purus fermentum vestibulum
  - Vestibulum lacinia eros a velit.
  - Pellentesque blandit nisi et augue ultricies egestas.



**Lorem ipsum dolor sit amet**

- Consectetur adipiscing elit.
  - Fusce ornare tellus eu arcu.
  - Proin ornare laoreet nulla.
- Donec eget nulla eu tortor
  - Vivamus molestie laoreet sem.
  - Pellentesque faucibus felis a purus.
  - Donec suscipit imperdiet lorem.
- Maecenas ut nibh nec purus fermentum vestibulum
  - Vestibulum lacinia eros a velit.
  - Pellentesque blandit nisi et augue ultricies egestas.



**B/W Coverage**  
**7%**

**Color Coverage**  
**3%**  
**2%**  
**1%**  
**4%**

**Printing Costs**

Phaser 8860 / 8860MFP:  
Competitive Color Laser:

**In Color**    **In B/W**  
\$ .02            \$ .02  
\$ .05            \$ .02

**Printing Costs**

Phaser 8860 / 8860MFP:  
Competitive Color Laser:

**In Color**    **In B/W**  
\$ .03            \$ .03  
\$ .09            \$ .04

**B/W Coverage**  
**11%**

**Color Coverage**  
**10%**  
**4%**  
**1%**  
**3%**



**August 20, 2007**  
Monday

7:00		
8:00		
9:00		
10:00		
11:00	Meeting with Tom	
12:00	Lunch with Mary	
1:00		
2:00		
3:00		
4:00		
5:00	Meeting with Tom	
6:00		

**August 20, 2007**  
Monday

7:00		
8:00		
9:00		
10:00		
11:00	Meeting with Tom	
12:00	Lunch with Mary	
1:00		
2:00		
3:00		
4:00		
5:00	Meeting with Tom	
6:00		

**B/W Coverage**  
**3%**

**Color Coverage**  
**1%**  
**1%**  
**1%**  
**4%**

**Printing Costs**

Phaser 8860 / 8860MFP:  
Competitive Color Laser:

**In Color**    **In B/W**  
\$ .02            \$ .02  
\$ .02            \$ .02