

EFI® Splash® RPX-ii Color Server for the DocuColor® 5000AP Digital Press

Improve productivity and achieve outstanding color in a Mac®-based solution.

The EFI Splash RPX-ii Color Server for the DocuColor 5000AP is a unique Mac-based workflow that is built on the Fiery® Color Server. It caters to graphic artists and production environments that require a high level of color quality, advanced job management, and submission tools to guarantee the maximum output from the Xerox DocuColor 5000AP for a Mac-based environment.

High-performance RIPping.

The Mac-based solution prints multi-set collated documents faster than ever before. With its significantly improved RIP performance, it also keeps pace with the Xerox DocuColor's quick turnaround time for all jobs.

Total Color Quality Control.

The Splash RPX-ii workflow solution allows graphic artists total control over color quality. With ColorTuner, it performs late-stage color editing of documents without opening them in their native applications. It also allows the user to view real-time changes with its WYSIWYG proofing capabilities or make a quick global color adjustment without having to re-RIP the job with Color Tweak.

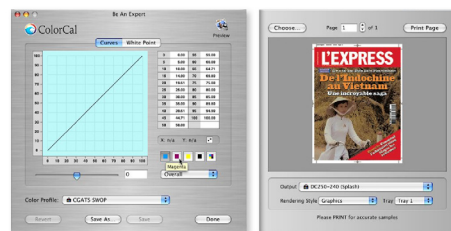
Splash RPX-ii's ability to print composite overprints of CMYK and spot colors is a key feature that enabled it to pass the Altona Test Suite¹ and the Ghent Output Suite², demonstrating the solution's full compliance with PDF/X-3 workflow and proving that it is a great proofing system for press simulation.

With ColorCal Expert Tools, graphic artists can edit profiles and see how real-time changes affect the printed output. They also can quickly and accurately use the EFI ES-1000 spectrophotometer to read the white point of the paper media and create custom-named spot colors quickly and easily with Spot Color Editor.

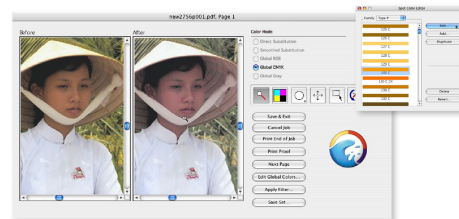
Power to Maximize the Xerox DocuColor 5000AP.

Splash RPX-ii provides scalability to the Fiery Color Server, driving the Xerox DocuColor 5000AP. This solution:

- Provides faster processing speed in the printing workflow when using Splash and Fiery simultaneously
- Accommodates more users within the same DocuColor print workflow by providing an end-to-end printing workflow to Mac users
- Facilitates throughput management with the unified print management interface for either Mac or PC users with Fiery Command WorkStation®
- Combines the unique and powerful capabilities at the Fiery Color Server, including Variable Data Printing, WYSIWYG imposition workflow with EFI Impose Fiery Edition, and sophisticated document composition with EFI Compose Fiery Edition



ColorCal Expert Tools



Color Tuner

1 The Altona Test Suite is a popular set of PDF files specially designed for testing digital output devices. For additional information, please go to www.eci.org.
2 The Ghent Output Suite has been created by the Ghent PDF Workgroup to test a RIP's handling of PDF files. For additional information, please go to www.gwg.org.

Enhanced Production Environment Workflow.

The EFI Splash RPX-ii Color Server for the DocuColor 5000AP delivers production features and a comprehensive suite of job management and submission tools for production printing environments. The production features reduce turnaround time, eliminate bottlenecks, and minimize downtime in the production workflow. It also allows you to assemble multiple-page documents by defining different paper substrates for chapters and to create front and back covers in the Mixed Media user interface. Splash RPX-ii also enables you to insert, create, and define tab pages with the most intuitive and flexible interface. The interface also lets you add color and images to the tab ears and to shorten job setup time with easy imposition features.

Flexible and Automated Job Submission.

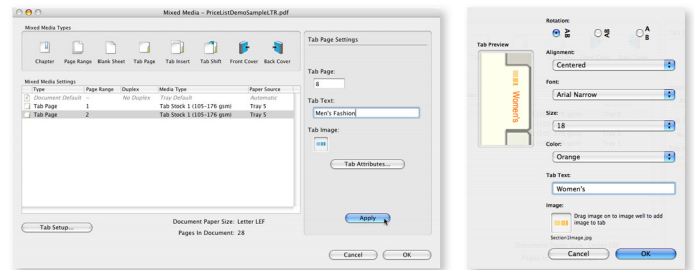
The Splash RPX-ii workflow solution offers sophisticated tools that seamlessly integrate into any graphic arts environment. These tools also enable you to automate job submission, adapt to multiple printing workflows, and reduce repetitive workflows for faster, error-free printing. In addition, Splash Hot Folders make it easy to automate file submission to the Splash with pre-selected print options, streamline the printing process, and automate production workflows across mixed Windows® and Macintosh® environments. The feature, Virtual Printers, enables Windows and Mac users to print directly from native applications. With GA File Converter, users can submit CT-NLW, TIFF-IT, and PDF-X file formats to Hot Folders without opening native applications and can achieve seamless integration with pre-press environments.

Easy Splash Maintenance and Network Integration.

The EFI Splash RPX-ii Color Server for the DocuColor 5000AP features more tools for administrators to install, set up, and maintain Splash on the network. The feature, Save Splash Server Preferences, allows you to import and export the preferences, so multiple Splash devices use the same preferences. The solution's new Secure Erase feature for spooled files offers enhanced security, ensuring that confidential documents are impossible to recover after they have been deleted from the Splash RPX-ii.

Minimize Errors and Improve Quality before Printing.

With the new Reporting and Control Tools, graphic artists can control image quality on every printed page, improve job quality, and minimize errors when processing and printing jobs. With Preflight Report, you can accurately proof press files before processing jobs. Postflight Report allows you to obtain global and object-specific job processing information, preventing problems before jobs are printed. Print Info prints key job specifications on each page, and the Control Strip prints a customizable color control bar to ensure color consistency and stability, while protecting the proofs printed by the Splash RPX-ii.



Mixed Media and Tabs

EFI® Splash® RPXii Color Server for the DocuColor® 5000AP Digital Press

Hardware Requirements

- Xerox® DocuColor® 5000AP
- EFI® Fiery® EXP50 Color Server
 - Software version 2.0 or greater

Recommended Apple Macintosh® Requirements

- Macintosh® OS 10.4.7 or later
- Two 2.66 GHz Dual-core Intel® Xeon®
- 160 GB Hard Drive
- 2 GB Host Memory
- SuperDrive
- 2 USB ports
- 2 Ethernet ports
- Monitor resolution: 1024 x 768

Preferred Apple Macintosh® Requirements

(for superior performance and functionality)

- Macintosh® OS 10.4.7 or later
- Two 3.0 GHz Quad-core Intel® Xeon®
- 250 GB Hard Drive
- 4 GB Host Memory
- SuperDrive
- 2 USB ports
- 2 Ethernet ports
- Monitor resolution: 1024 x 768

For more information on the EFI® Splash® RPX-ii Color Server, call 1-800 ASK XEROX or visit us on the Web at: www.xerox.com.

