

# Xerox® FreeFlow Output Manager®

Multiple printers working  
together, automatically.



# Manage your fleet of printers from one location.

**Work as one, automatically.** FreeFlow Output Manager® provides a single point of control for managing mixed jobs and multiple production systems. This software can automatically prioritize, schedule and split print jobs throughout your operation. As a result, you can reduce turnaround time and increase capacity. And that can help you lower your costs and grow your revenue.

## Connect *all* your printers.

As the single point through which all jobs are scheduled and routed, FreeFlow Output Manager serves as a window on your production world.

- It accepts jobs from anywhere on your network.
- Print jobs can be sent directly to the FreeFlow Output Manager from your PC or Mac applications.
- You can establish Hot Folder directories to receive jobs on your network that are automatically polled and printed via FreeFlow Output Manager.

- Jobs can also be automatically sent directly from Mainframes via a port connection that is polled.
- FreeFlow Output Manager can route jobs to your production center printers, as well as multi-site distributed print locations via the network.

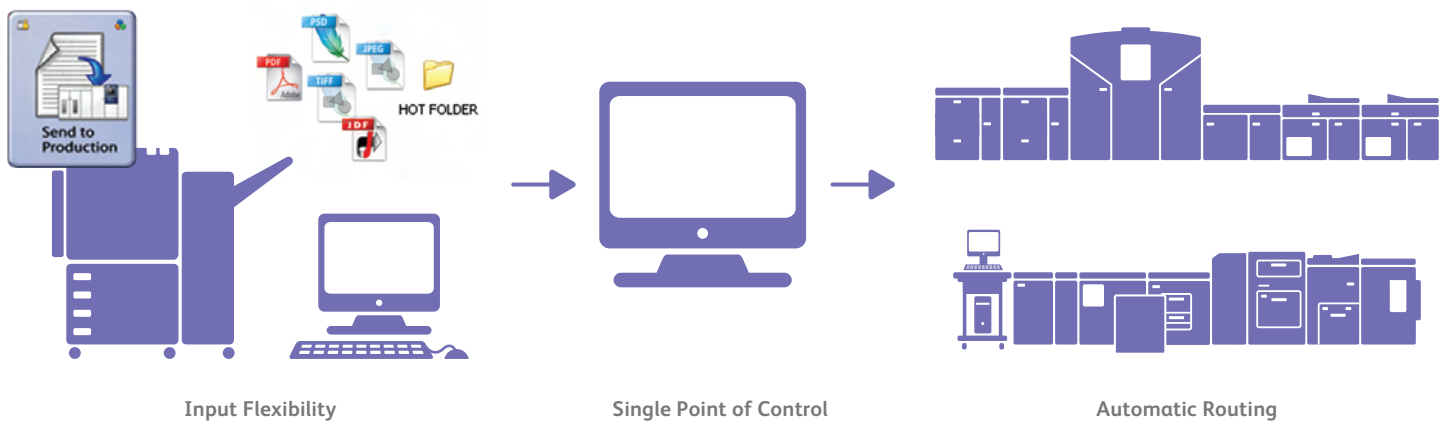
## Tailor to your needs.

Customize Output Manager for specific locations, work shifts, job types and other criteria. Further increase your operational effectiveness by using FreeFlow Output Manager to assign queues and printers for specific groups or staff members.

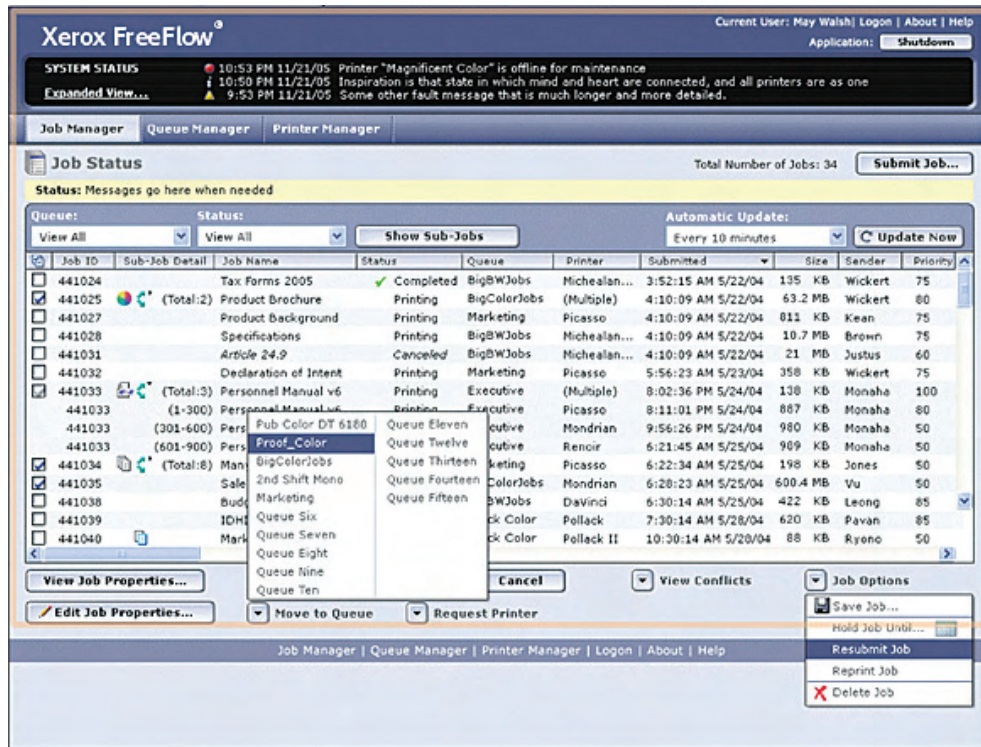
## Maximize productivity.

FreeFlow Output Manager eliminates many labor-intensive processes by automatically routing jobs to the appropriate devices, including the full line of Xerox® monochrome, highlight-color and full-color digital printers. Mixed jobs can be produced more cost effectively by setting color-splitting thresholds—select pages output to a color device, others to a monochrome device. Sophisticated load-balancing and job scheduling grow your print capacity without investment in additional technology.

## Efficiently balance your workflow with FreeFlow Output Manager.



## A single point of control.



## Accept jobs from virtually anywhere.

FreeFlow Output Manager works with all Xerox® digital printers (production and office), as well as other manufacturers' printers with IPP and LPR support. So it enhances the flexibility and productivity of your entire operation.

It gives you the input flexibility to accept jobs from job-submission clients, the Internet, networked PCs, mainframes, hot folders, multifunction devices, and office printers. Plus, with job-attribute matching, it eliminates manual decision-making by automatically routing jobs to the appropriate printer.

Our new Hot Folder as a Service functionality can be started and stopped the same way as other Windows Services. Additionally, Universal Naming Convention (UNC) filepath naming can now be used when defining a remote folder.

- **Load balancing.** Maximize your throughput by automatically processing jobs across multiple printers.
- **Job splitting.** Improve productivity by splitting jobs based on color vs. monochrome pages, copy count or page count.
- **Accounting module.** Manage printer accounting information from a central point and ensure balanced usage across your fleet of printers.
- **Paper Stock Library Forwarding.** FreeFlow applications now display printer's stock library from FreeFlow Output Manager®, enabling an accurate selection of paper stock available prior to job submission.
- **Hot Folder as a Service.** Hot Folders are a Windows Service and automatically start when FreeFlow Output Manager is started, can be started and stopped the same way as other Windows Services, and include recovery, folder polling and job processing.
- **Xerox® iGen4® 220 Perfecting Press Workflow Support.**
  - All jobs are sent through Output Manager for the iGen4 220
  - A single Output Manager handles multiple iGen4 220 printers
- **Job Ordering Throughput.** Output Manager forwards jobs to multiple printers simultaneously increasing print throughput.
- **Support for:**
  - Windows Server 2008 SP2, 64-bit operating systems that run as a 32-bit application
  - Mozilla FireFox 3.6 browser

## The power of Xerox® FreeFlow®.

Fewer touches. Great productivity. The Xerox® FreeFlow Digital Workflow Collection can help you automate to save time and reduce costs for every job—from point of entry to final delivery. Whether you use one of these products or integrate several to meet your specific workflow needs, FreeFlow solutions help you connect with your customers, reduce costs and enable new applications.

Orders come in through your current system or the 24/7 Web portal enabled through **FreeFlow Web Services**.

Immediately, they're processed through **FreeFlow Process Manager®**, which automatically handles preflight, imposition, scripting and more.

**FreeFlow Express to Print** supports the full line of Xerox® production printers providing a simple tool for submission, ticketing and previewing jobs.

Jobs can also be prepared with our robust **FreeFlow Makeready®** solution—putting advanced job preparation capabilities at your fingertips.

Now, **FreeFlow Output Manager** takes over, acting as a centralized collection point to route and schedule jobs across multiple printers.

Finally, the **FreeFlow Print Server** RIPs the jobs, providing timesaving efficiency, excellent image quality and benchmark security.

Looking to gain a competitive edge? Use the **FreeFlow Variable Information Suite** to add personalization and cost-effective security features to your documents.

The bottom line? Whether you use one of these products or integrate several to meet your specific workflow needs, you can connect with your customers, reduce costs and enable new applications.

## Xerox® FreeFlow Output Manager® Specifications

### Minimum System Requirements

**FreeFlow Output Manager requires a server platform that meets the following minimum specifications for optimal performance:**

- Processor: Dual Intel® Xeon® 2.8 GHz equivalent or better
- System Memory: 4 GB or better
- Hard Drive: 250 GB of available SCSI/SAS hard disk space to install Output Manager software; additional space required for customer data
- Video Capability: PCI-based or AGP Video Controller with 128 MB RAM
- Ethernet Capability: 10/100/1000 MB/sec
- Display: Analog CRT or LCD Monitor
- Input Devices: Keyboard and Mouse
- Peripheral Devices: DVD/CD-ROM Drive
- Backup Storage Device recommended

### Minimum Software Requirements

- Windows® Server 2003 SP2 Operating System or Windows® 2008 Server SP2
- One of the following Internet browsers:
  - Internet Explorer® 7.0 or 8.0 in compatibility mode
  - Firefox® 3.0, 3.5 and 3.6

For more information on Xerox® FreeFlow Output Manager, call 1-800 ASK XEROX or visit us on the Web at: [www.xerox.com/freeflow](http://www.xerox.com/freeflow).