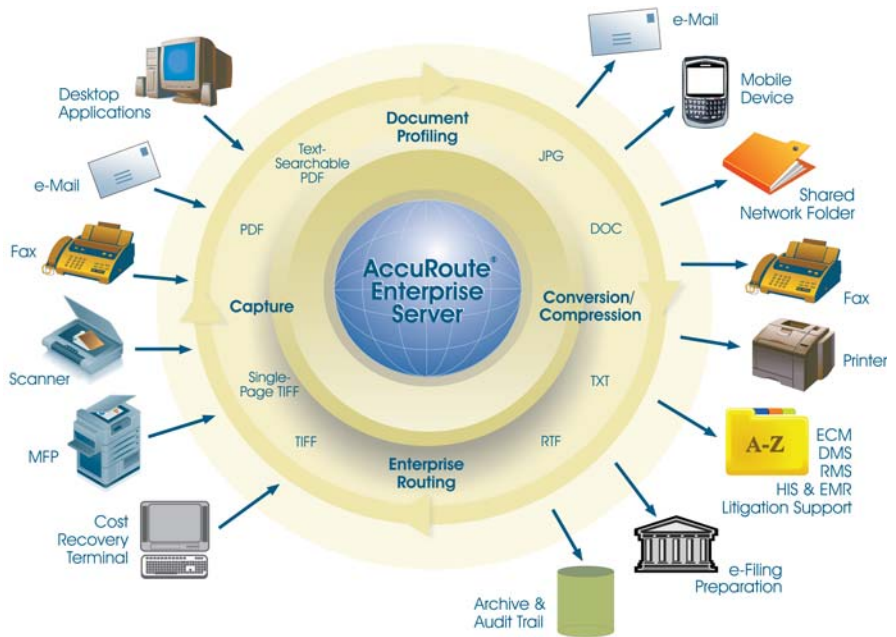


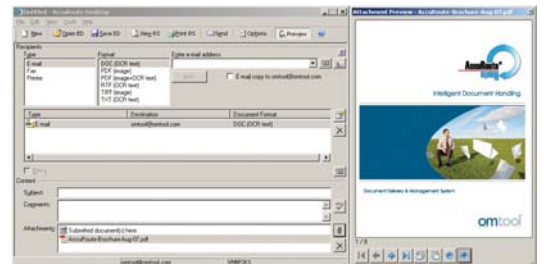
## What is AccuRoute?

AccuRoute is the platform for enterprise document capture, conversion and communication that enables businesses to handle document distribution and routing requirements efficiently and cost-effectively. By integrating paper and electronic documents into a single, efficiently managed system, AccuRoute allows users to define document distribution rules creating streamlined electronic workflows – from the user's desktop or a Xerox EIP-enabled MFP device panel.

## How does AccuRoute work?



AccuRoute's **Embedded Device Client** enables custom buttons on the touch screen control panel on Xerox EIP-enabled MFPs.



The **AccuRoute Desktop** provides users with flexible control over how documents are captured, converted, and distributed.



**Enterprise Document Capture and Handling**

## What are AccuRoute's value propositions?

- DMS, RMS and Litigation Support Integration**  
 AccuRoute integrates with existing, familiar applications that users need on a daily basis, decreasing training time and increasing user-adoption. AccuRoute allows organizations to maximize enterprise investments by leveraging existing DMS, RMS, and ECM systems, enabling quicker and more efficient archiving, searching and retrieving.

# Enterprise Document Capture and Handling

- **Device Independence**

AccuRoute is an enterprise-level solution with integrated fax capabilities that is compatible with any networked scan-enabled device, fax machine, or digital MFP. By using Xerox EIP-enabled devices, customers can reduce or eliminate their standalone fax and scanning hardware. Most offices have a distributed mix of imaging and printing hardware. AccuRoute offers an adaptable and flexible solution, providing hardware vendors access to once-restricted opportunities.

- **Enterprise Fax Server**

Omtool's AccuRoute solution comes with an enterprise fax server as part of its core functionalities. Customers do not require a third party fax solution, allowing greater security and administrative control over the company's faxing procedures. This secure fax server provides convenient scan-to-self and scan-to-fax functions, as well as many other distributions such as to a public or personal network folder, printer, DMS, RMS, cost recovery system, and more.

- **Simultaneous Document Conversion and Distribution**

This comprehensive document solution enables end-users to merge mixed-mode (printed and electronic) documents, compress them, and convert them to numerous document formats, including e-filing preparation (splitting and merging files based on their file size or page count). Users can also define their choice of multiple document destinations, from e-mail to fax to DMS. All of these routing rules can be user-driven, taking the burden off the IT administrative support team.

- **Simple Routing Sheet or Xerox EIP Device Client**

AccuRoute offers an increased level of document management efficiency by providing capture, conversion, and routing capabilities right at the desktop or directly from any Xerox EIP-enabled MFP device panel. Using one scan, customers save valuable time by taking advantage of AccuRoute's simultaneous functionalities (multiple formats, multiple destinations, with one button).

- **Cost Recovery and Billing**

The AccuRoute and Xerox integration allows walk-up users to access advanced scanning capabilities within the scan-enabled MFP, providing efficient cost recovery processes. If the user does not have a separate cost recovery terminal installed at the MFP or if the terminal is not implemented for scanning purposes, AccuRoute can collect client billing information which is then validated. All the traditional AccuRoute functionalities can be accessed directly from the front panel of most cost recovery terminals.

- **"Best Practices" for Business Continuity**

With AccuRoute, an organization can develop a mission-critical and accurate records retention policy as well as addressing clustering, failover, and disaster recovery needs.

- **Direct Omtool Support**

Omtool provides direct support for their solutions.

- **Small-Medium Business (SMB) Offerings**

Xerox and Omtool can deliver these solutions to small and medium-sized businesses by offering customized packages depending on end-user and hardware needs. AccuRoute is enterprise scalable, deployable, and manageable, allowing organizations the freedom to grow at their own pace.

## Who is Omtool?

Omtool, Ltd. is a leading provider of document capture and handling solutions that simplify the integration of paper and electronic documents into enterprise information management systems. Our solutions are used worldwide by businesses in document-intensive industries that demand secure handling, integration, and tracking of documents in full compliance with a range of regulatory requirements.

### AccuRoute Use Cases

#### Legal

- Case Management
- Contract Management
- Cost Recovery
- Disaster Recovery
- Records Management
- e-Filing Preparation
- Litigation Support

#### Healthcare

- Community- Wide Scheduling
- Claims Management
- Patient Registration
- Document Imaging

#### Financial Services

- Business Continuity
- Compliance
- Contract Management



**AccuRoute**<sup>®</sup>



#### Corporate Headquarters

Omtool, Ltd.  
6 Riverside Drive  
Andover, MA 01810  
Tel: 978.327.5700  
Fax: 978.659.1300  
Sales: 800.886.7845

#### Omtool Europe, Ltd.

25 Southampton Buildings  
London WC2A 1AL UK  
Tel: +44 (0) 203 043 8580  
Fax: +44 (0) 203 043 8581  
E-mail: salesuk@omtool.com

[www.omtool.com](http://www.omtool.com)